



PHL Hydraulics

Specialist Hydraulic Jacking, Bolting, Stressing.

FLAT JACKS

Flat Jacks;-

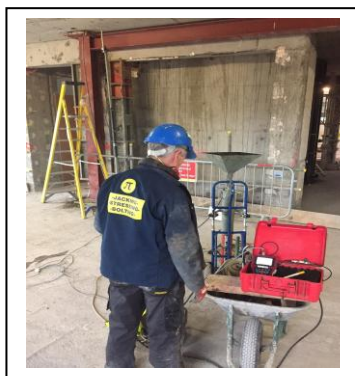
Flat Jacks consist of a mild steel capsule, circular in plan, with a cross section that is initially dumbbell shaped. The dished portions are fitted with a ground steel, thrust plate . When the jack is pressurised with water, oil or grout the torodial rim deforms to allow the thrust plates to move apart. The low operating pressure of 150bar max, provides for low bearing forces on the jacked surfaces. Maximum stroke is 25mm.



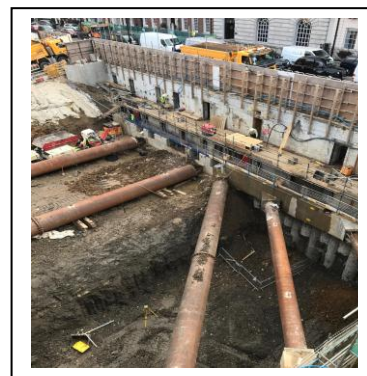
Flat Jack

TYPICAL APPLICATIONS.

- Pre-loading steelwork,
- Propping/shoring,
- Load transfer,
- Control of thrust forces,
- Underpinning.
- Structural lifting
- Measurement of forces,
- Pre-stressing,



Pre-loading Steelwork



Propping

Selection Table.

Jack No	Force/T	Capsule diameter	Thrust plate diameter	Closed Height	Maximum Stroke	Required Access Gap	Weight
FJ12	8	120mm	75mm	30mm	25mm	32mm	1.6kgs
FJ15	15	150mm	100mm	32mm	25mm	35mm	2.1kgs
FJ22	37.5	220mm	170mm	32mm	25mm	35mm	5.5kgs
FJ25	50	250mm	200mm	32mm	25mm	35mm	7.7kgs
FJ27	60	270mm	220mm	32mm	25mm	35mm	8.6kgs
FJ30	80	300mm	250mm	32mm	25mm	35mm	11.5kgs
FJ35	101	350mm	300mm	32mm	25mm	35mm	15.8kgs
FJ42	160	420mm	370mm	32mm	25mm	35mm	23kgs
FJ48	215	480mm	430mm	32mm	25mm	35mm	34kgs
FJ60	346	600mm	550mm	32mm	25mm	35mm	53.5kgs
FJ75	580	750mm	700mm	32mm	25mm	35mm	82.4kgs
FJ87	764	870mm	820mm	32mm	25mm	35mm	114.5kgs

When selecting a jack, the ideal working range should be 25-75% of jack capacity.

Unit 5, Greenwood Close, Rambridge Road, Luton. LU2 0TN

Email; aredmond@phlhydraulics.com

Unit 408C, Greenogue Business Park, Rathcoole, Co Dublin. D24 YY95.

Email; nfallon@phlhydraulics.com